

Metallic Adaptors and Reducers

Ex db : Ex eb : Ex nR : Ex ta : IP66 : IP68 Class I Div 1 : AEx db : AEx eb : AEx ta



PRODUCT DESCRIPTION

“AR” Series Certified Adaptors & Reducers provide a method of matching electrical thread forms on Ex equipment whilst maintaining Ex db, Ex eb, Ex ta and Ex nR methods of explosion protection. Approved for use in mining (except Aluminium) and surface installations, they maintain IP66 & IP68 for IEC type applications and Class I Division 1 and Type 4X/6P for CEC / NEC type applications. All external metric threads are fitted with a nitrile O-ring as standard.

COMPLIANCE STANDARDS:

EN 60079-0, EN 60079-1, EN 60079-7, EN 60079-15, EN 60079-31
IEC 60079-0, IEC 60079-1, IEC 60079-7, IEC 60079-15, IEC 60079-31 & 60529
C22.2 (see certificate), UL514B, UL1203, ANSI/UL 60079-0/1/7, ISA 60079-31, UL 50E

CERTIFICATION:

UKEX	I M2 II 1D 2G Ex db I Mb / Ex db IIC Gb / Ex eb I Mb / Ex eb IIC Gb / Ex ta IIIC Da II 3G Ex nR IIC Gc
ATEX	I M2 II 1D 2G Ex db I Mb / Ex db IIC Gb / Ex eb I Mb / Ex eb IIC Gb / Ex ta IIIC Da II 3G Ex nR IIC Gc
IECEX	Ex db I Mb / Ex db IIC Gb / Ex eb I Mb / Ex eb IIC Gb / Ex nR IIC Gc / Ex ta IIIC Da
CEC - Canada	Ex db IIC Gb / Ex eb IIC Gb / Ex ta IIIC Da Class I Division 1, Groups A, B, C & D Class II Division 1, Groups E, F & G Class III, Type 4X/6P
NEC - USA	Class I Zone 1 AEx db IIC Gb / AEx eb IIC Gb / Class II Zone 20 AEx ta IIIC Da Class I Division 1, Groups A, B, C & D Class II Division 1, Groups E, F & G Class III, Enclosure Type 4X/6P
EAC	PB Ex db I Mb X / 1Ex db IIC Gb X / PB Ex eb I Mb X / 1Ex eb IIC Gb X / Ex nR IIC Gc X Ex ta IIIC Da X
INMETRO - Brazil	Ex db I Mb / Ex db IIC Gb / Ex eb I Mb / Ex eb IIC Gb / Ex nR IIC Gc / Ex ta IIIC Da
CCC - China	Ex db I Mb / Ex db IIC Gb / Ex eb I Mb / Ex eb IIC Gb / Ex nR IIC Gc / Ex ta IIIC Da
UKRAINE	I M2 Ex db I Mb / Ex eb I Mb / II 2GD Ex db IIC Gb / Ex eb IIC Gb / Ex tb IIIC Db II 3G Ex nR IIC Gc
CCoE - India	Ex db I Mb / Ex db IIC Gb / Ex eb I Mb / Ex eb IIC Gb / Ex nR IIC Gc
ECAS-Ex	Ex db I Mb / Ex db IIC Gb / Ex eb I Mb / Ex eb IIC Gb / Ex nR IIC Gc
ABS	Specified ABS Rules
LLOYD'S	Ex db I Mb / Ex db IIC Gb / Ex eb I Mb / Ex eb IIC Gb / Ex nR IIC Gc / Ex ta IIIC Da
DNV	Ex db I Mb / Ex db IIC Gb / Ex eb I Mb / Ex eb IIC Gb / Ex nR IIC Gc / Ex ta IIIC Da

CERTIFICATION No:

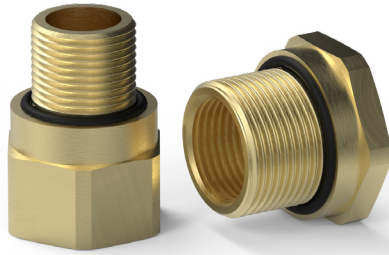
UKEX	CML 21UKEX1038X & CML 21UKEX4042X
ATEX	CML 19ATEX1090X & CML 19ATEX4092X
IECEX	IECEX CML19.0022X
CEC - Canada	CSA 2310046
NEC - USA	CSA 2310046
EAC	RU C-GB.AX58.B.05106/24
INMETRO - Brazil	NCC 13.2189 X
CCC - China	2021312313000373
UKRAINE	CU 18.0319 X
CCoE - India	PESO P494321/15 & P494321/19
ECAS-Ex	25-06-153223/E25-06-159811/NB0007
ABS	25-0158110-PDA
LLOYD'S	LR2124442TA
DNV	TAE00004XK

NOTES

- Assembly instructions must be read prior to installation and adhered to in full.
- For Ex db applications female threads must comply with clause 5.3 of IEC 60079-1.
- For Ex nR applications parallel entry threads must be installed with a suitable entry thread seal.
- Where applicable, the standard O-ring material is nitrile. Other options are available upon request.
- Aluminium versions are not suitable for Group I Mining applications.
- Only products with Metric and NPT threads are marked with CSA approval.
- Brass products are not marked or intended to be used in Class I Division 1 installations.
- Peppers supply products with parallel entry threads that conform to the flameproof threaded joint



PRODUCT TYPE AR



EXAMPLE PART NUMBERING:
AR1BF/NP/M20/M25

AR	Thread converting Adaptor/Reducer
1	No IP O-ring(O) - Nitrile (1) - Silicone (3)
B	Brass (B) - Stainless Steel (S) - Aluminium (A)
F	Multiple Certification
K-V-H	Locknut & Nylon (K), Fibre (V) or PTFE (H) IP Washer
T	Including Earth Tag
S	Including Serrated Washer
1	Quantity per kit
NP	Nickel Plated
M20	Male Entry Thread
M25	Female Entry Thread

OPTIONAL ACCESSORIES:

Locknut (L)	Brass (ACBLN) / St-Steel (ACSLN) / Aluminium (ACALN)
Earth Tag (T)	Brass (ACBET) / St-Steel (ACSET) / Aluminium (ACAET)
IP WASHERS	Nylon (N) / Fibre (J) / PTFE (Z)
Serrated Washer	Stainless Steel (S)

IP RATING:	IP66 & IP68 (100 metres for 7 days) & Type 4X/6P
OPERATING TEMPERATURE:	O-ring - None -100°C to +400°C O-ring - Nitrile -30°C to +100°C O-ring - Silicone -60°C to +200°C
MATERIALS:	Brass, Stainless Steel or Aluminium
PLATING:	Electroless Nickel

Male and Female Thread References and Size information can be found on page 77 of our product catalogue. Adaptor and Reducer size information is available on pages 78 + 79 of our product catalogue. Male and female threads are manufactured in accordance with:-

- ISO Metric threads to ISO 965-1, ISO 965-3, BS3643 and IEC 60423
- NPT and NPS threads are in accordance to ANSI B1.20.1
- PG threads to DIN40430
- ET threads to Imperial Conduit BS31
- ISO Pipe Parallel to ISO 228 and BS2779 (BSPP, G, R, PF & Tpy 6)
- ISO Pipe Taper to ISO 7-1 and BS21 (BSPT, Gc, Gk, Rk, PT & Kmpy 6)

requirements of IEC/EN 60079-1 and other equivalent standards. We usually incorporate a thread run out according to the general machining techniques and will not have a full form thread for the entire length. Peppers Cable Glands Limited will not be held responsible for clients' installations where this has not been taken into account.

- Where approval in addition to UKEX, ATEX, IECEX and CSA is required, this must be clearly requested at time of enquiry / order.