

A8**/A8C*** Cable Glands for flat cable – ASSEMBLY INSTRUCTIONS

Brief Description

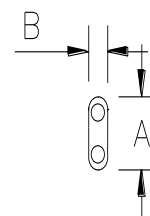
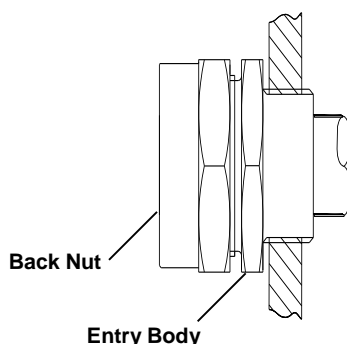
The Peppers A8**/A8C*** range of cable glands are for use in the appropriate Hazardous Areas with flat/heat trace cable. These cable glands give environmental protection to IP66/67/68 (50 metres for 7 days). The A8C*** provides a connecting thread for mating rigid conduit or flexible conduit fittings.

Warning

Please read these instructions carefully. These products should not be used in applications except as detailed here or in our datasheets, unless confirmed in writing by Peppers. Peppers take no responsibility for any damage, injury or other consequential loss caused where products are not installed or used according to these instructions. This leaflet is not intended to advise on the selection of product. Further guidance can be found in the standards listed overleaf or the prevailing code of practice.

STEP-BY-STEP FITTING INSTRUCTIONS

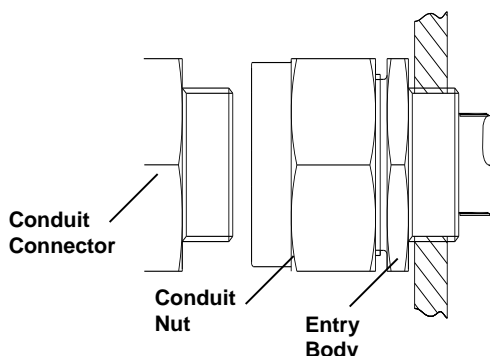
TYPE A8**



See Table A
for Cable
Dimensions

TYPE A8C***

(A8CF** version shown)



STEP-BY-STEP FITTING INSTRUCTIONS

TYPE A8** / A8C***

- 1 Fit Entry Body, allowing for any installation accessories, and fully engage the thread into the equipment. Hand-tighten, then suitably secure with a wrench. Further guidance can be found in Peppers document CT0030 which can be found on our website.
- 2 Prepare cable end as required. Insert cable through the cable gland.
- 3 Position the cable correctly within the gland. The seal must grip the outer jacket of the cable when the cable gland is tightened.
- 4 Tighten Back Nut (Conduit Nut on A8C***) to Entry Body. Ensure the seal makes full contact with cable sheath and then tighten the Back Nut by the additional turns/torque (whichever is greater) as detailed below in Table A.
- 5 **For A8C*** versions only.** Secure the Conduit Nut with a wrench, to prevent further tightening, and fasten the mating conduit/fitting to the Conduit Nut to complete the installation.

Table A - Cable Size Acceptance and Installation Data (mm)

Gland Size	A8** / A8C*** Outer Sheath Data				Back Nut Assembly – Point 4	
	MIN		MAX		Torque	Turns
	A	B	A	B		
20S	6.3	4.0	11.7	7.0	5 Nm	1
20	10.3	5.6	13.5	9.0	5 Nm	1
20R	8.1	5.8	13.5	6.2	5 Nm	1
25	10.6	4.0	16.2	7.0	15 Nm	1 1/2

A8**/A8C*** Cable Glands for flat cable – ASSEMBLY INSTRUCTIONS

Approvals and Certification

Approval	Certificate Number	Protection Concept / Type
ATEX (2014/34/EU)	CML 19ATEX1346X / CML 21UKEX1033X	Ex II 1D 2G Ex db IIC Gb / Ex eb IIC Gb / Ex ta IIIC Da
UKCA (SI 2016 No. 1107)	CML 19ATEX4109X / CML 21UKEX4043X	Ex II 3G Ex nR IIC Gc
IECEX	IECEX CML 19.0104X	Ex db IIC Gb / Ex eb IIC Gb / Ex nR IIC Gc / Ex ta IIIC Da
CSA	1356011	Ex db IIC Gb / Ex eb IIC Gb / Ex ta IIIC Da Class I Zone 1 AEx eb IIC Gb / Zone 20 AEx ta IIIC Da CL II Gr EFG / CL III Type 4X IP66 IP68
INMETRO	NCC 13.2187 X	Ex db IIC Gb / Ex eb IIC Gb / Ex nR IIC Gc / Ex ta IIIC Da
EAC	RU C-GB.BH02.B.00693/18	1Ex d IIC Gb X / 1Ex e IIC Gb X / 2Ex nR IIC Gc X / Ex ta IIIC Da X
UKRAINE	CLJ 18.0321 X	II 1D 2G 3G Ex db IIC Gb / Ex eb IIC Gb / Ex nR IIC Gc / Ex ta IIIC Da
CCC	2021312313000447	Ex d IIC Gb / Ex e IIC Gb / Ex nR IIC Gc / Ex tD A20 IP66
CCoE / PESO	P494321/7 & P494321/13	Ex db IIC Gb / Ex eb IIC Gb / Ex ta IIIC Da / Ex nR IIC Gc
ABS	20-LD1944057-PDA	Specified ABS Rules – See certificate
Lloyd's Register	LR2124442TA	Ex db IIC Gb / Ex eb IIC Gb / Ex nR IIC Gc / Ex ta IIIC Da
Russian Maritime	19.00189.278	Ex d IIC Gb / Ex e IIC Gb / Ex ta IIIC Da

Installation Guidance

Point	Advice
1	BS/EN/IEC 60079-10 BS/EN/IEC 60079-14 National Electrical Code (NEC 500 – 505) Canadian Electrical Code (CSA C22.1)
2	Installation should only be carried out by a competent electrician, skilled in cable gland and appropriate electrical installations.
3	Comprehensive details of the compliance standards can be found in the product certificates which are available for download from our website.
4	NO INSTALLATION SHOULD BE CARRIED OUT UNDER LIVE CONDITIONS.
5	Threaded entries: the product can be installed directly into threaded entries. Threaded entries should comply with the relevant applicable standards and have a lead-in chamfer to allow for full engagement of the threads. Failure to provide a sufficient lead-in chamfer may lead to ingress sealing issues. For Ex db applications a minimum of 5 fully engaged parallel threads is required. Metric threads are supplied with an o-ring and will maintain IP66 and IP68. Other parallel entry threads will maintain an IP rating of IP64. A Peppers sealing washer should be used to maintain all IP ratings greater than IP64. Whilst Peppers products with tapered threads, when installed into a threaded entry, have been tested to maintain IP66 without any additional sealant, due to the differing gauging tolerances associated with the use of tapered threads it is recommended to use a non-hardening thread sealant if an IP rating higher than IP64 is required.
6	Clearance holes: these shall be no larger than 0.7mm above the nominal diameter of the external entry thread. The product should be secured with a Peppers locknut and the threads tightened to ensure the cable gland is secure. Where no integral sealing method is provided a Peppers sealing washer should be used to maintain IP ratings. A Peppers serrated washer should be used for additional installation protection. It is recommended that tapered threads are not used in clearance holes.
7	To maintain the Ingress Protection rating of the product, the entry hole must be perpendicular to the surface of the enclosure. The surface should be sufficiently flat and rigid to support the assembly and make the IP joint. The surface must be clean and dry. The product incorporates a thread run out according to general machining techniques and will not have a full form thread for the entire length and as such entry threads should have a suitable lead-in chamfer to ensure a seal is maintained. Further guidance can be found on Peppers website. It is the user's/installer's responsibility to ensure that the interface between the enclosure and cable gland is suitably sealed for the required application. Any thread sealant used shall be suitable for use in hazardous area locations, be suitable for the temperature range at the point of mounting, shall not contain evaporating solvent and cannot cause corrosion at the threaded interface when used for dissimilar materials.
8	Where a bonding connection to earth is required a Peppers earth tag should be used. Peppers earth tags have been independently tested to comply with the Category B values given in IEC 62444. Further guidance can be found on Peppers website. Peppers earth tags should be fitted over the external entry thread from either inside or outside the enclosure. If fitted internally they must be secured with a Peppers locknut and optionally a Peppers serrated washer.
9	Peppers external metric entry threads comply with ISO 965-1 and ISO 965-3 with a 6g tolerance fit. Peppers standard metric thread pitch is 1.5mm for threads up to M75 and 2.0mm for size M80 and above. Alternative thread pitches are available upon request. Peppers external NPT threads are in accordance with ASME B1.20.1 with gauging to clause 8.1. All threads comply with the threaded joint requirements of clause 5.3 from IEC 60079-1. Information on other thread types can be found in the product certificates.
10	Once installed do not dismantle except for routine inspection. An inspection should be conducted as per IEC/EN 60079-17. After inspection the gland should be re-assembled as instructed, ensuring the compression nut, mid cap and back nut are correctly tightened to ensure the cable is secure.
11	If required an anti-seize lubricant may be used to aid assembly and routine inspection. The lubricant should comply with the prevailing code of practice and care should be taken to ensure no lubricant comes into contact with the cable gland seals as this may impair performance.

Interpretation of Markings. Markings on the outside of this gland carry the following meanings:

Cable Gland Type & Size A8-a-b-ccc-ddd-nn

a =	Main component material B = brass S = stainless steel	ddd =	Entry thread type and size
b =	Protection Concept F = Exdb E = Ex eb	nn =	Year of manufacture
ccc =	Gland size		

Cable Gland Type & Size A8C-a-b-c-ddd-eee-fff-nn

a =	Connection Thread F = Female Connection Thread M = Male Connection Thread	eee =	Gland size
b =	Main component material B = brass S = stainless steel	fff =	Entry thread type and size
c =	Protection Concept F = Exdb E = Ex eb	nn =	Year of manufacture
ddd =	Connection thread type and size		

Specific Conditions of Use

- The A8** and A8C*** ranges of cable glands shall not be used in enclosures where the temperature, at the point of contact, is outside the range of -60°C to +180°C.
- The A8** and A8C*** ranges of cable glands shall only be used for fixed installations, in addition the cables must be effectively clamped to prevent pulling or twisting.
- The A8** and A8C*** ranges of cable glands, when installed in accordance with the manufacturer's instructions and with an appropriate enclosure on which they are fitted, are capable of providing an ingress protection of IP66 and IP68 (50 metres 7 days).
- The threaded entry component threads without interface o-ring seals installed in an explosive dust atmosphere, within threaded entries, shall only be fitted into enclosures that have either:
 - parallel entries that will ensure that a minimum of 5 full threads of contact will be maintained, this is in accordance with clause 5.1.2 of EN 60079-31:2014 / IEC 60079-31: 2013,
 - tapered entries that will ensure that a minimum of 3 ½ full threads of contact will be maintained, this is in accordance with clause 5.1.2 of EN 60079-31:2014 / IEC 60079-31: 2013