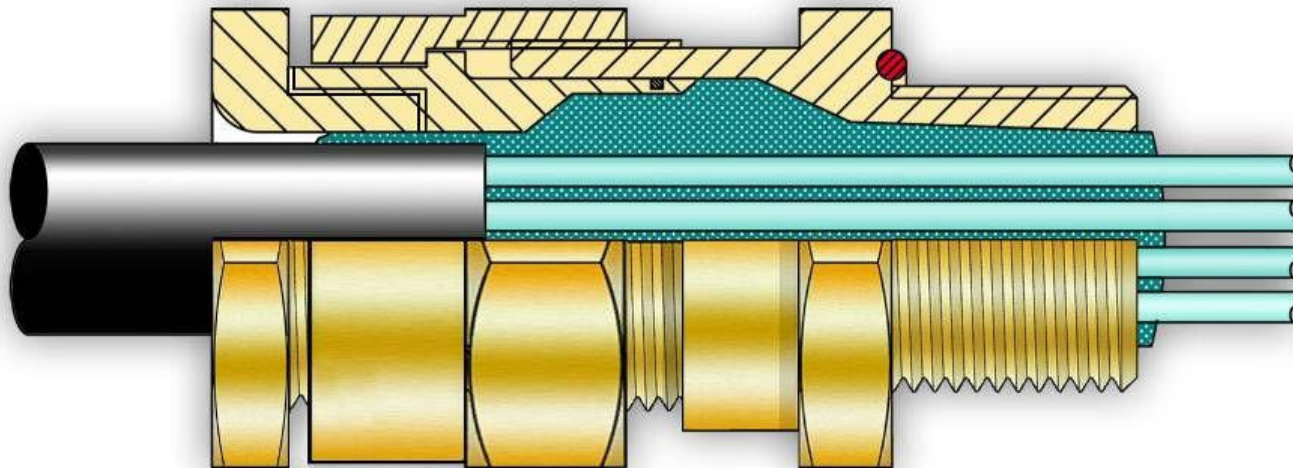


Installation Guide for Peppers CR-X** Range of Compound Barrier Cable Glands

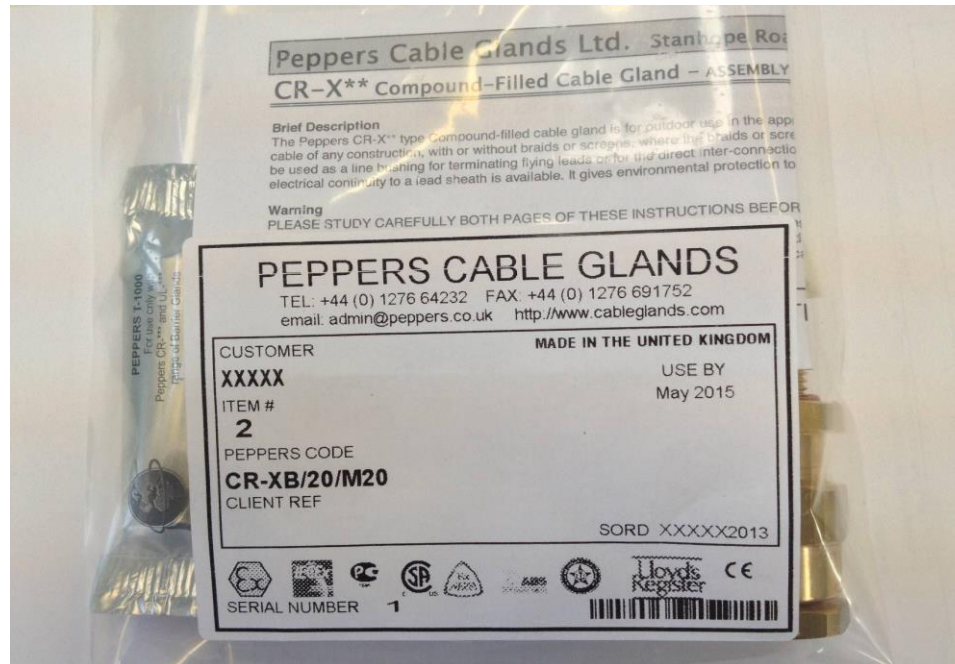


CR-X** Type Installation Guide

- This presentation is a visual guide to aid with the installation of Peppers CR-X** range of cable glands. It should only be used in conjunction with the supplied installation instructions. Please note that the assembly in the presentation is made off in a treaded entry that does not provide enough engagement as no suitable threaded entry was available at the time. The CR-X** range of cable glands are intended for use in threaded entries complying with the requirements of IEC 60079-1.
- It is the user/installers responsibility to ensure that the integrity of the installation is secure before energizing any equipment.
- Where applicable all installations should be conducted in accordance with the appropriate local, national or international standards and codes of practice

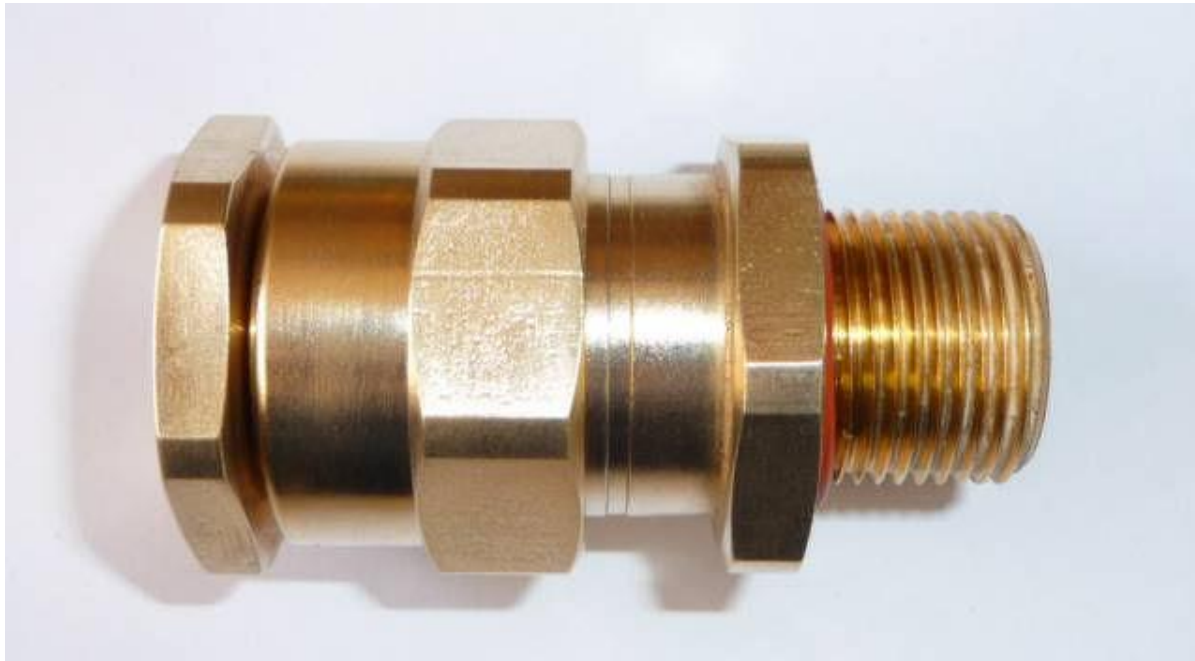
CR-X** Type Installation Guide

The CR-X** Type Cable Gland Kit including gland, barrier compound, assembly instructions and installation gloves.



CR-X** Type Installation Guide

The CR-X** Type Cable Gland



CR-X** Type Installation Guide

1. Split gland as shown.



CR-X** Type Installation Guide

2. Fit Entry Body. Hand-tighten. Then suitably secure with a wrench.



CR-X** Type Installation Guide

3. Slide Rear Assembly onto cable as shown.



CR-X** Type Installation Guide

4. Cable Preparation

Strip back the outer sheath to suit the installation.



CR-X** Type Installation Guide

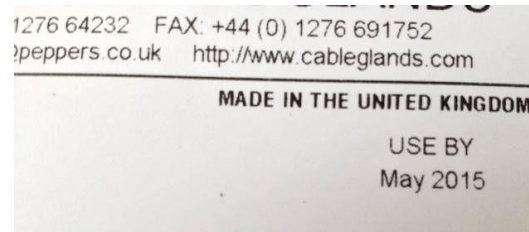
HEALTH AND SAFETY WARNING

The resin used in the compound can cause eye and skin irritation. For your personal protection, wear plastic or latex gloves while mixing and applying. The uncured compound should not be allowed to come into contact with foodstuff and disposed of safely in accordance with local regulations.

A COMPREHENSIVE SAFETY DATA SHEET IS AVAILABLE ON REQUEST

CR-X** Type Installation Guide

5. Check compound has not passed its "Use By" date. Installation at temperatures below 10°C should be avoided.



6. Trim any hardened pieces from ends of stick. Mix the compound by rolling, folding and breaking. Ease mixing by cutting large sticks in half. Fully mixed compound has a uniform yellow colour with no streaks.

Note.

The next slide shows how adequately mixed compound should appear prior to forming it around the cable.

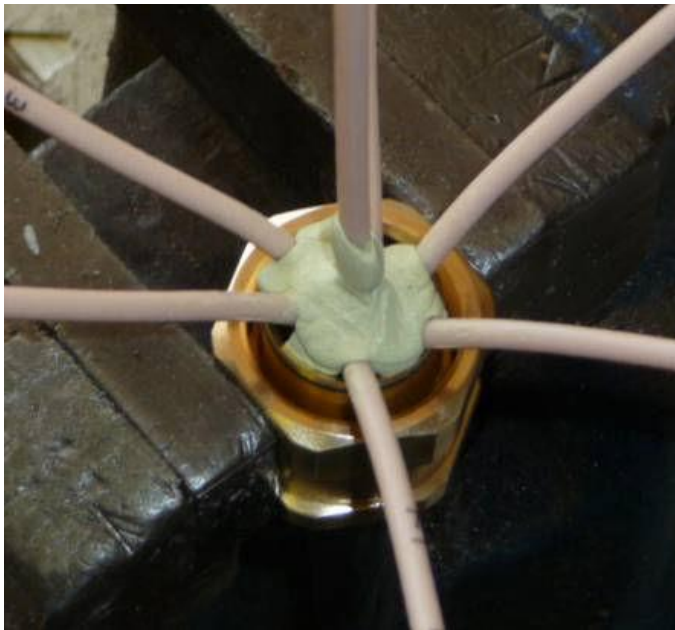
CR-X** Type Installation Guide

Adequately Mixed Compound



CR-X** Type Installation Guide

7. Support the cable and Rear Assembly holding them roughly concentric. Splay out the cores and starting in the middle pack small amounts of compound.



CR-X** Type Installation Guide

7. Cont...

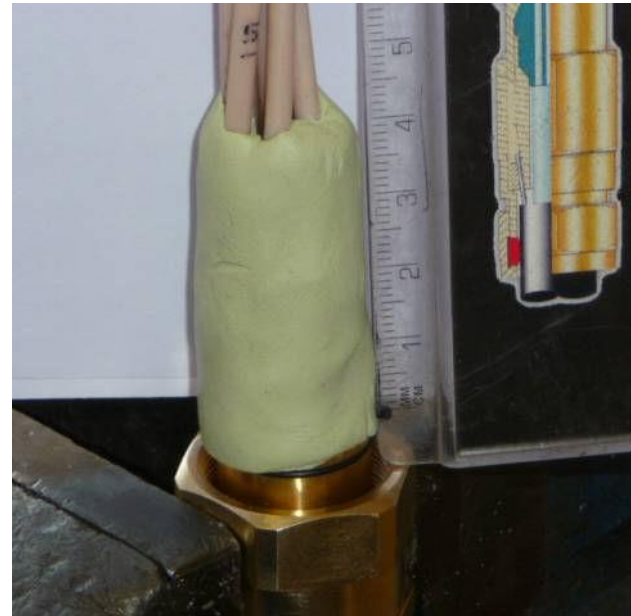
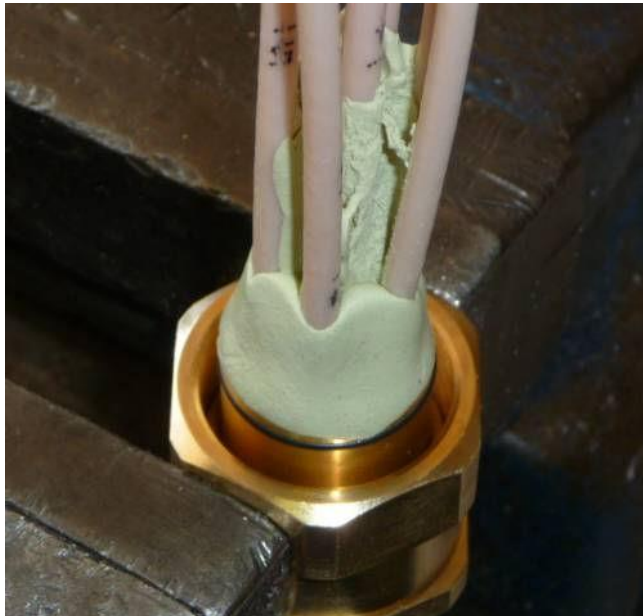
Begin by building up compound around the cable in the assembly cup. Re-straighten each core and work outwards until all gaps are filled. Bundle the cores with cord or tape so they are not disturbed.



CR-X** Type Installation Guide

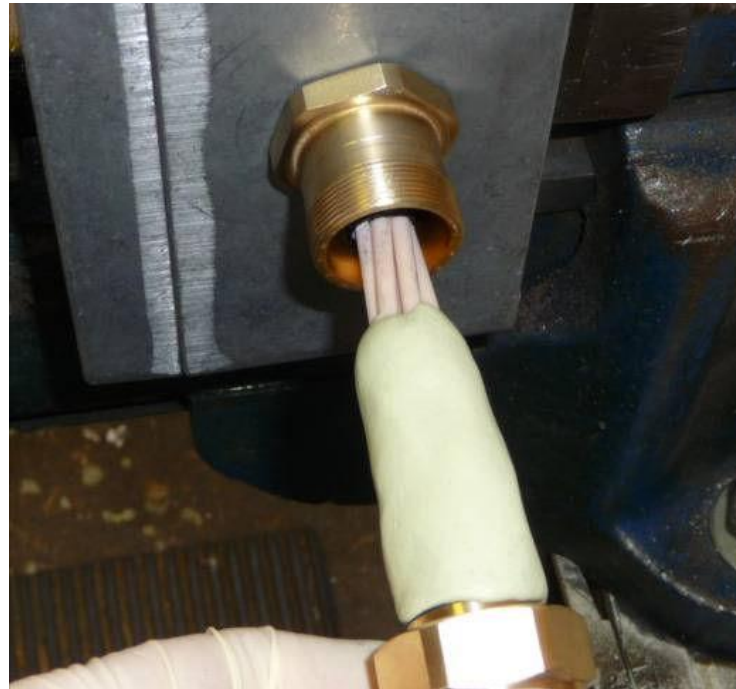
7. Cont...

Continue to build up the compound around the outside of the cable. It should be built up with a slight taper to an approximate length of 40mm.



CR-X** Type Installation Guide

8. Pass cable through the entry body and push the compound into Entry Body.



CR-X** Type Installation Guide

8. Cont...

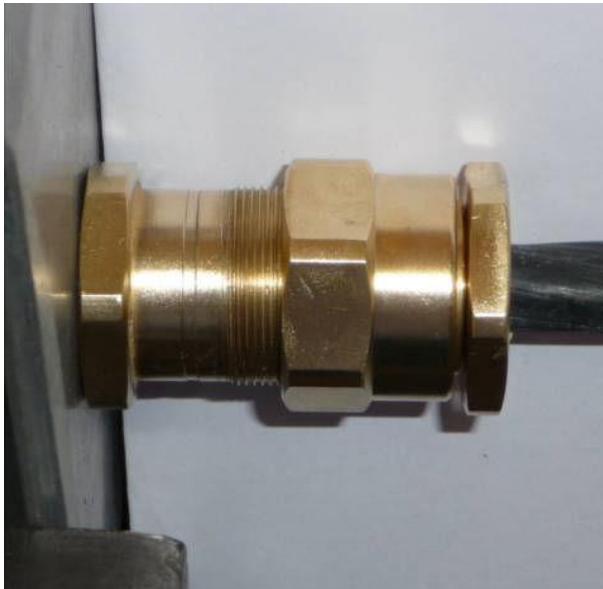
Continue to push the compound through the entry body removing all of the squeezed out compound.



CR-X** Type Installation Guide

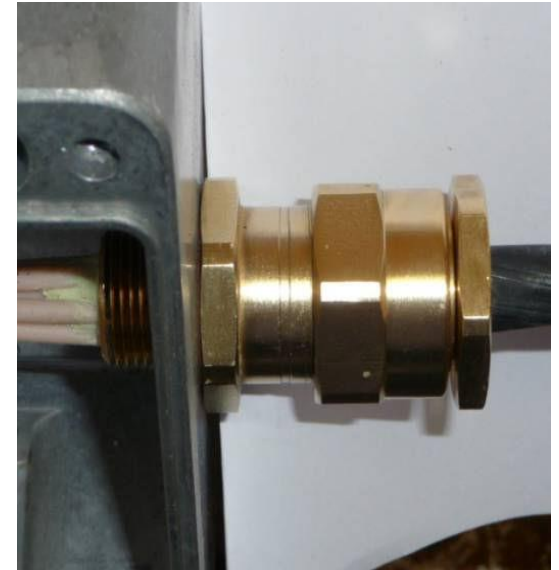
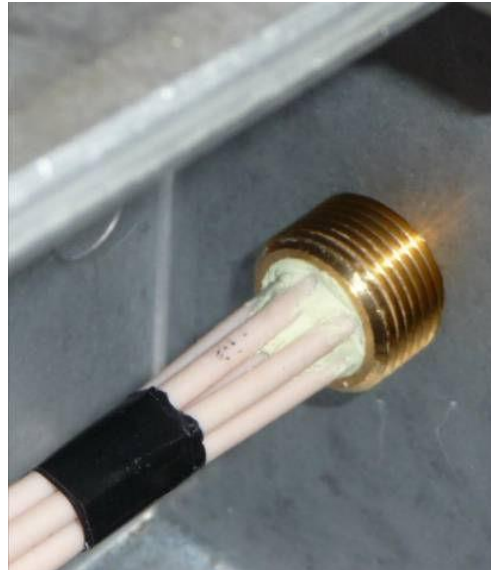
8. Cont...

Push the rear assembly until the threads engage. Once engaged tighten the Union Nut 7 full turns.



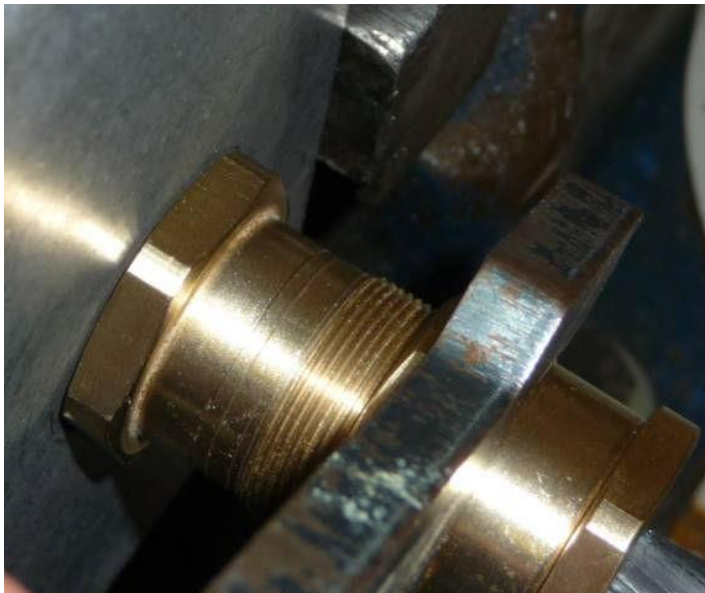
CR-X** Type Installation Guide

9. Clean off excess compound from Entry Body to allow withdrawal when compound has cured (arrow E on instructions). Cores may be disturbed after 1 hour. Leave to cure for 4 hours when working at 21° C.



CR-X** Type Installation Guide

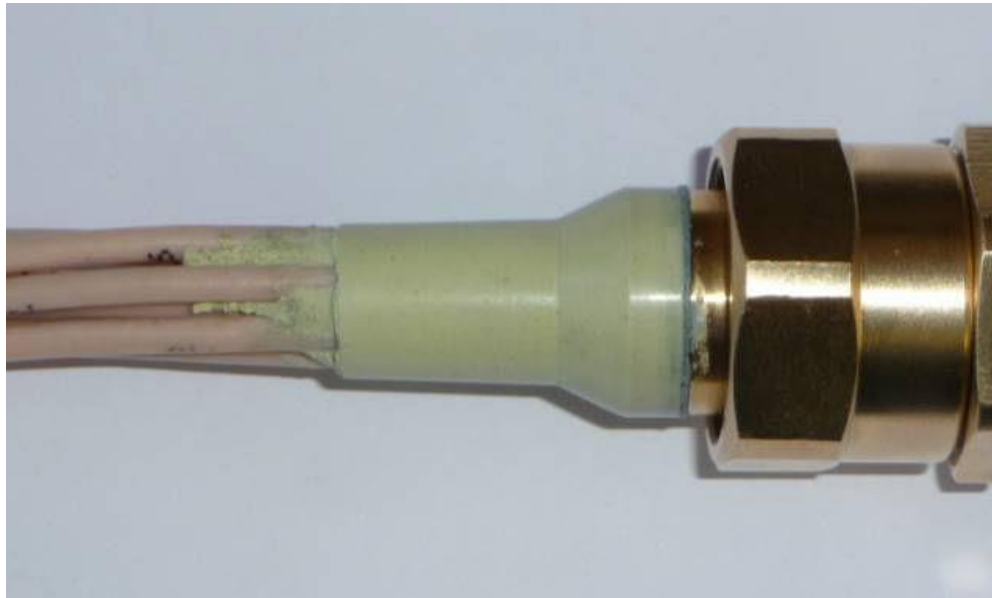
10. To release and pull back the joint for inspection unscrew Union Nut. Using a wrench on the Back Nut, rotate the Back Nut no more than 1/16 of a turn to release the compound from the entry body.



CR-X** Type Installation Guide

10. Cont.

Ensure that the compound is uniform and full form.



CR-X** Type Installation Guide

11. Fit the compound back into the entry body and then fully hand tighten the Union Nut. Then tighten the Union Nut with a wrench according to the installation instructions.



CR-X** Type Installation Guide

Completed Assembly

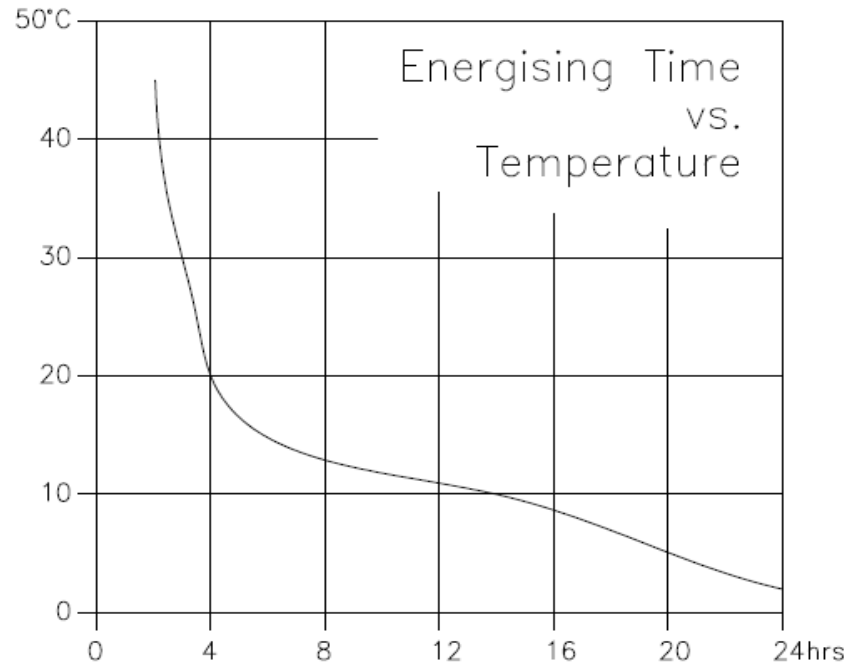


Installation Guide

CT0035 V1.0

CR-X** Type Installation Guide

12. The equipment should not be energised until the compound has been left to cure for at least 4 hours when working at 21° C. See the chart 'Energising Time vs. Temperature' for further guidance.



If additional information or assistance is required please contact Peppers for further details: -

Peppers Cable Glands Limited

Stanhope Road - Camberley

Surrey. GU15 3BT

United Kingdom

Tel: +44 (0) 1276 64232 Fax: +44 (0) 1276 691752

Email: admin@peppers.co.uk

Website: www.cableglands.com