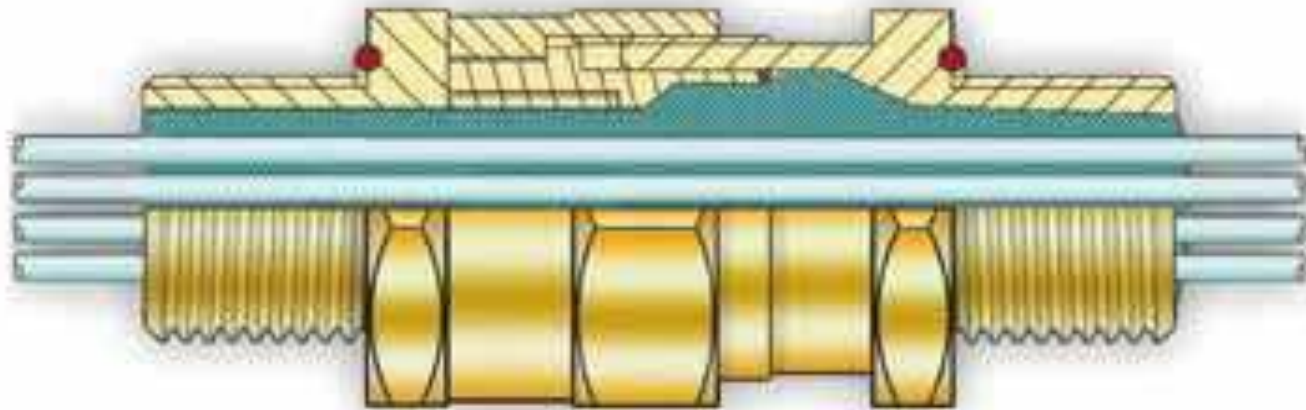


Installation Guide for Peppers CR-S*M Range of Compound Barrier Stopper Box



CR-S*M Type Installation Guide

- This presentation is a visual guide to aid with the installation of Peppers CR-S*M range of cable glands. It should only be used in conjunction with the supplied installation instructions. Please note that the assembly in the presentation may be made off in a clearance hole or a non Ex d entry thread depending upon what equipment is available at the time. The CR-S*M range of cable glands are intended for use in threaded entries complying with the requirements of IEC 60079-1.
- It is the user/installers responsibility to ensure that the integrity of the installation is secure before energizing any equipment.
- Where applicable all installations should be conducted in accordance with the appropriate local, national or international standards and codes of practice

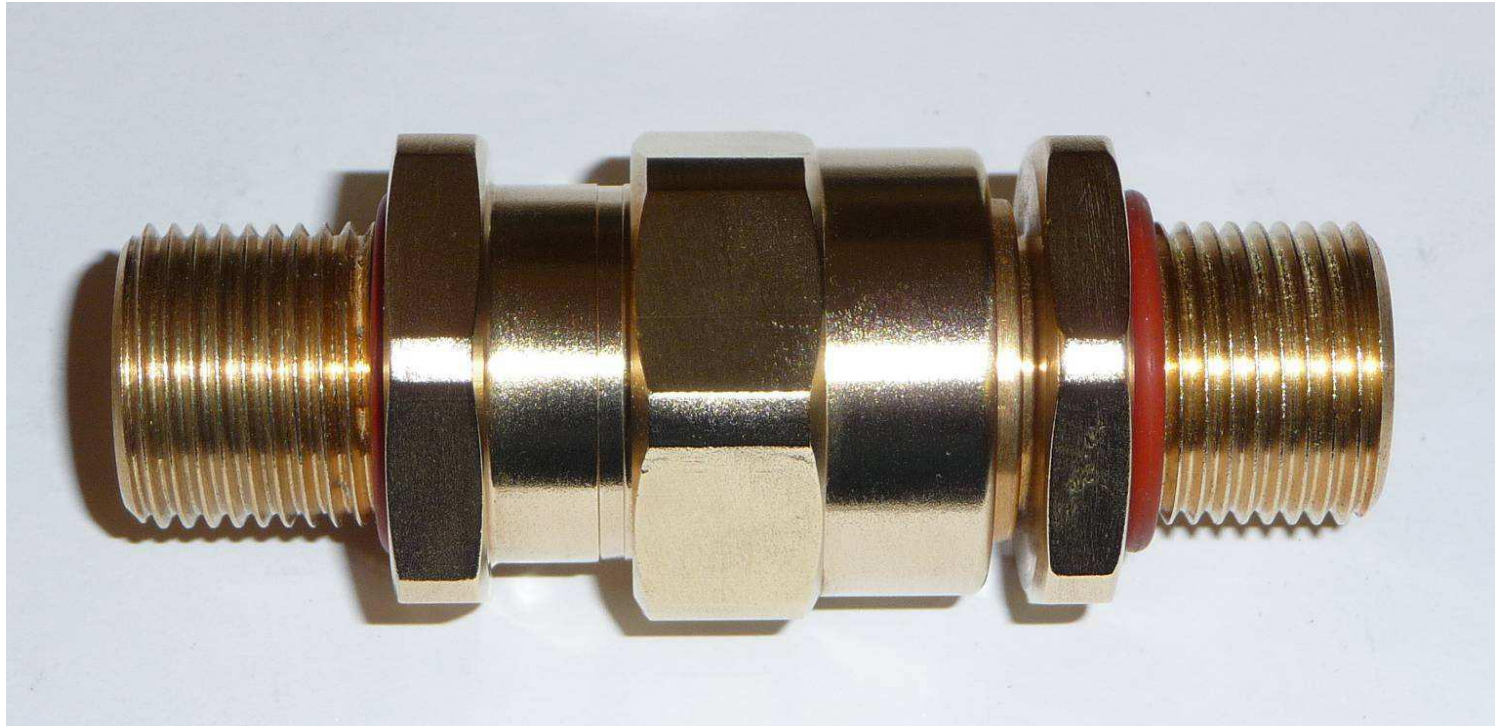
CR-S*M Type Installation Guide

The CR-S*M Type Cable Gland Kit including gland, barrier compound, assembly instructions and installation gloves.



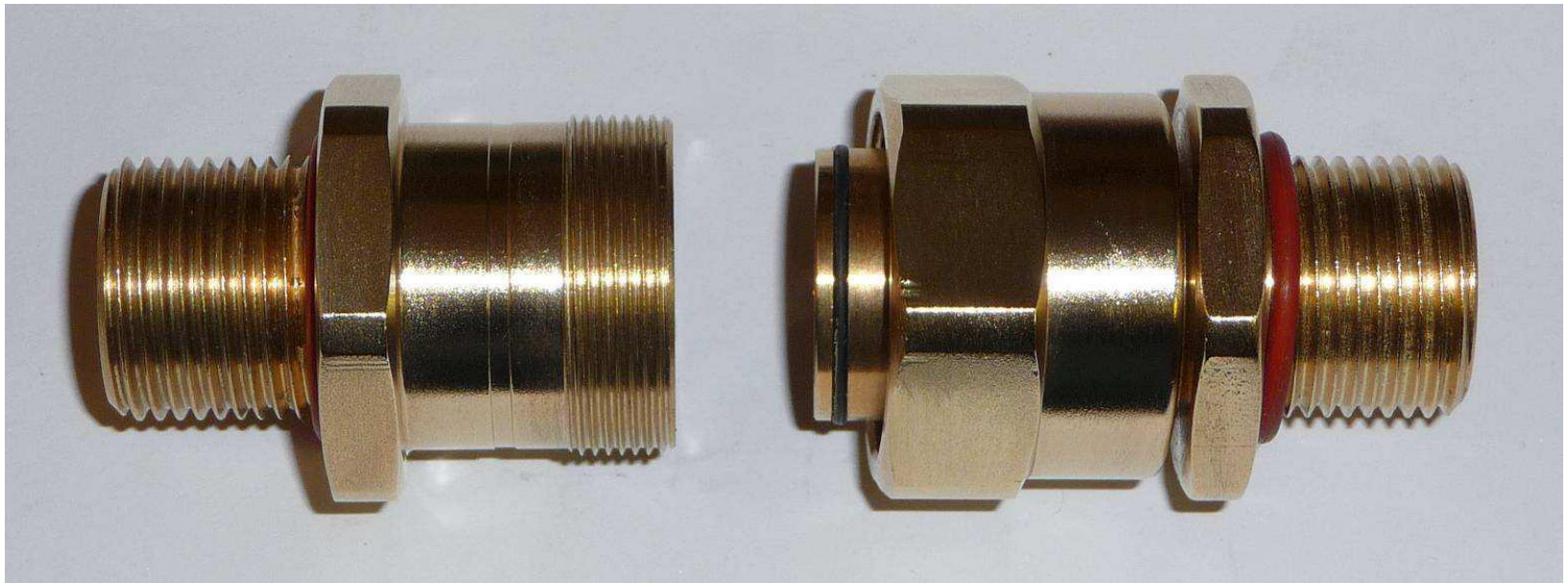
CR-S*M Type Installation Guide

The CR-S*M Type Cable Gland



CR-S*M Type Installation Guide

1. Split gland as shown.



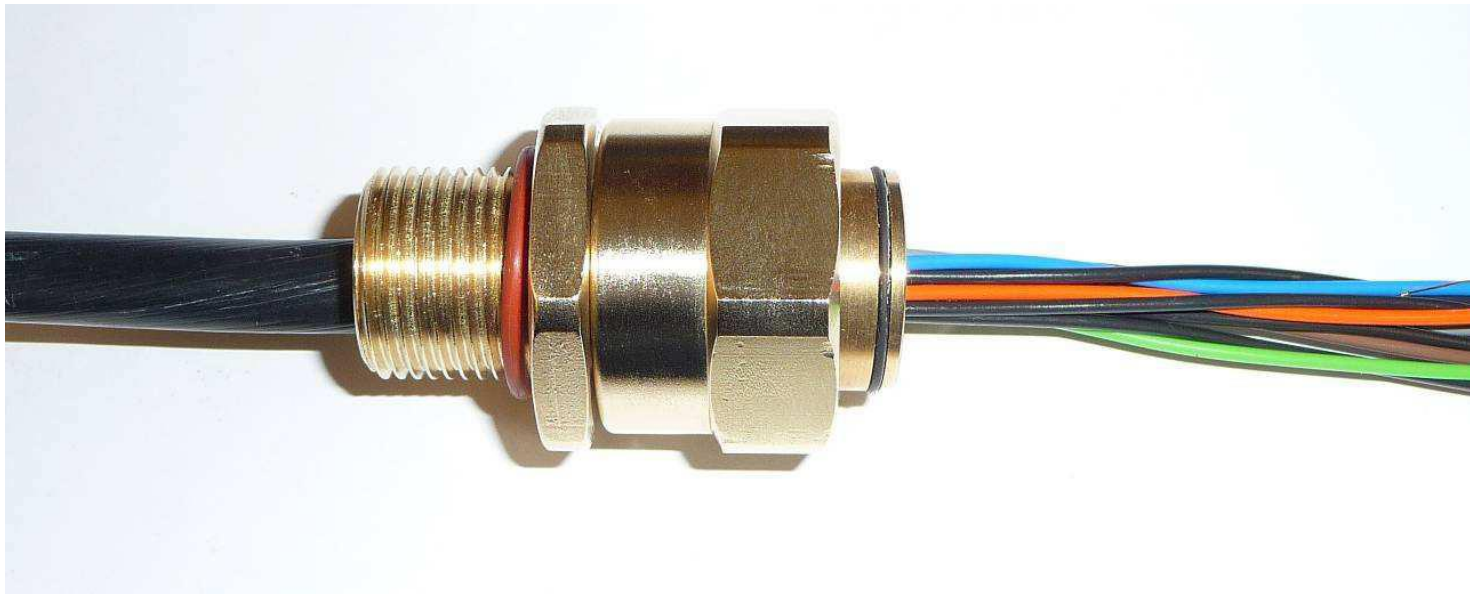
CR-S*M Type Installation Guide

2. Fit Entry Body. Hand-tighten. Then, using a wrench, tighten a further $\frac{1}{2}$ turn



CR-S*M Type Installation Guide

3. Prepare conductors to suit the installation and pass through the assembly as shown.



CR-S*M Type Installation Guide

HEALTH AND SAFETY WARNING

The resin used in the compound can cause eye and skin irritation. For your personal protection, wear plastic or latex gloves while mixing and applying. The uncured compound should not be allowed to come into contact with foodstuff and disposed of safely in accordance with local regulations.

A COMPREHENSIVE SAFETY DATA SHEET IS AVAILABLE ON REQUEST

CR-S*M Type Installation Guide

4. Check compound has not passed its "Use By" date. Installation at temperatures below 10°C should be avoided.
5. Trim any hardened pieces from ends of stick. Mix the compound by rolling, folding and breaking. Ease mixing by cutting large sticks in half. Fully mixed compound has a uniform yellow colour with no streaks.

Note.

The next slide shows how adequately mixed compound should appear prior to forming it around the individual cores of the cable.

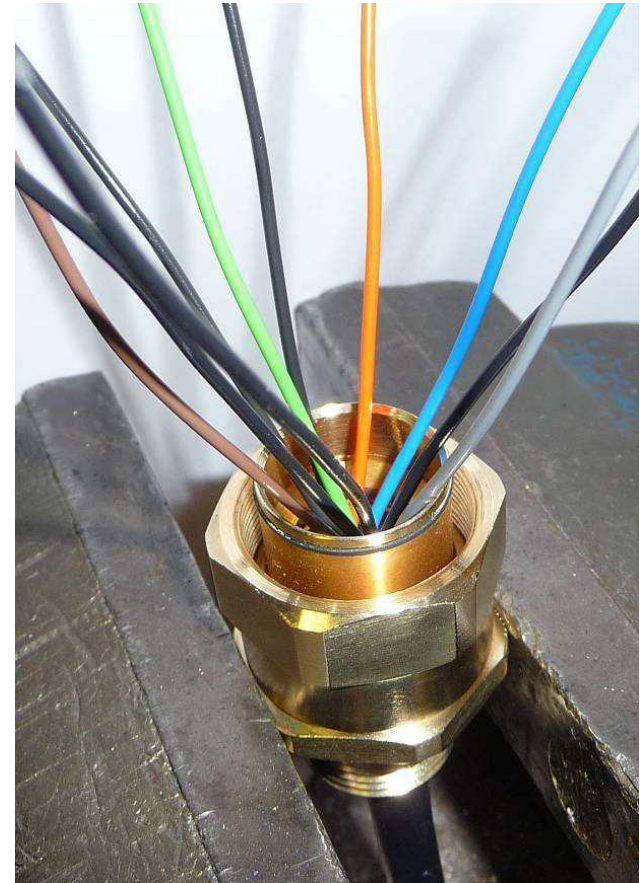
CR-S*M Type Installation Guide

Adequately Mixed Compound



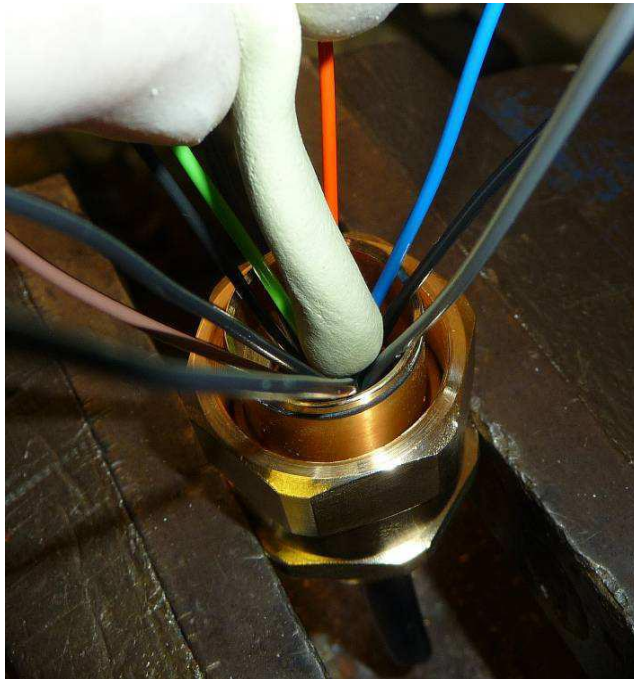
CR-S*M Type Installation Guide

6. Support the conduit/union assembly.
Starting at the middle, pack small amounts of rolled-out compound between the cores. Work outwards until all gaps are filled. Bundle the cores with cord or tape so they are not disturbed. Wrap compound around the outside of the core bundle, then locate the compound & cores into the Union cup. Ensure that the cup is completely filled. Build up compound around the outside of the cores, with a slight taper and to approximate compound length shown in diagram and Table 1 column 6 of the supplied instructions.



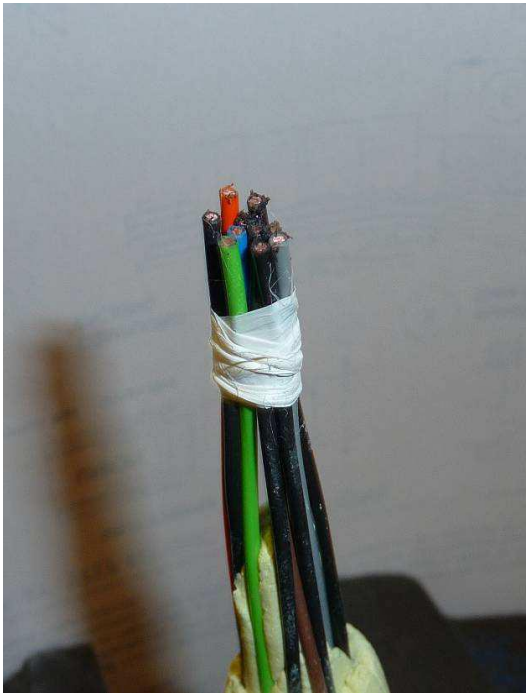
CR-S*M Type Installation Guide

- Pack between the cores and build outward: -



CR-S*M Type Installation Guide

- Bundle the cores and wrap compound around the bundle: -



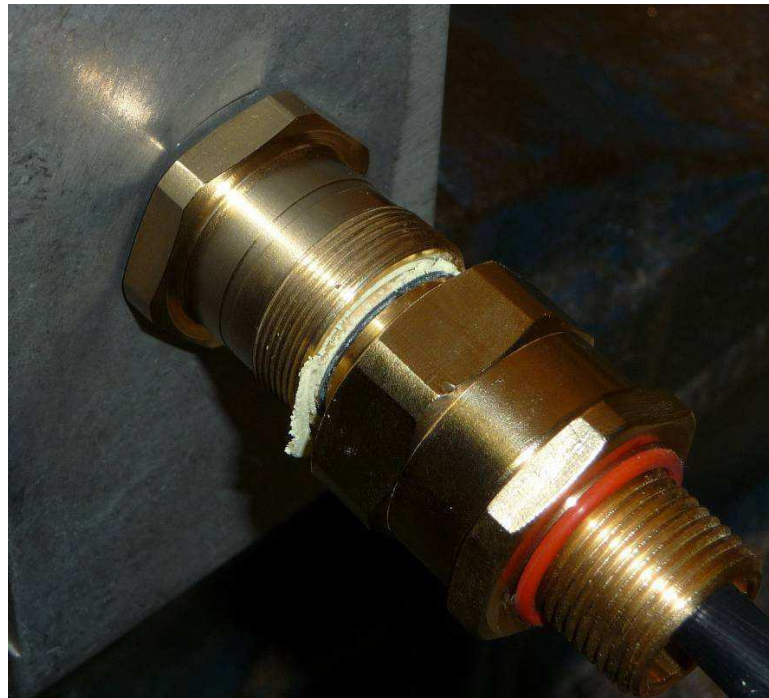
CR-S*M Type Installation Guide

7. Pass cores through & push compound into Entry Body until Union cup engages. Remove squeezed out compound.



CR-S*M Type Installation Guide

- Removing squeezed out compound



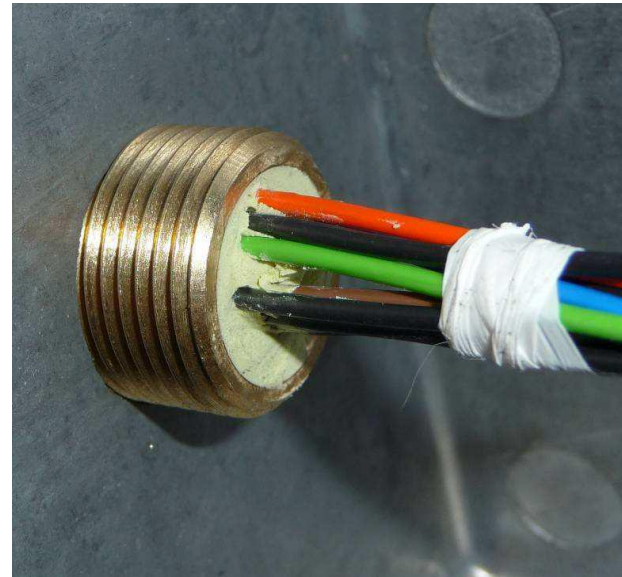
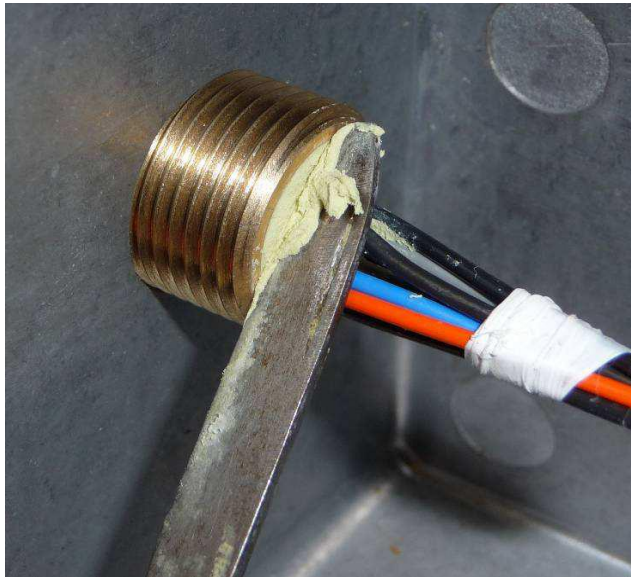
CR-S*M Type Installation Guide

- Once engaged screw the Union Nut 7 full turns onto Entry Body



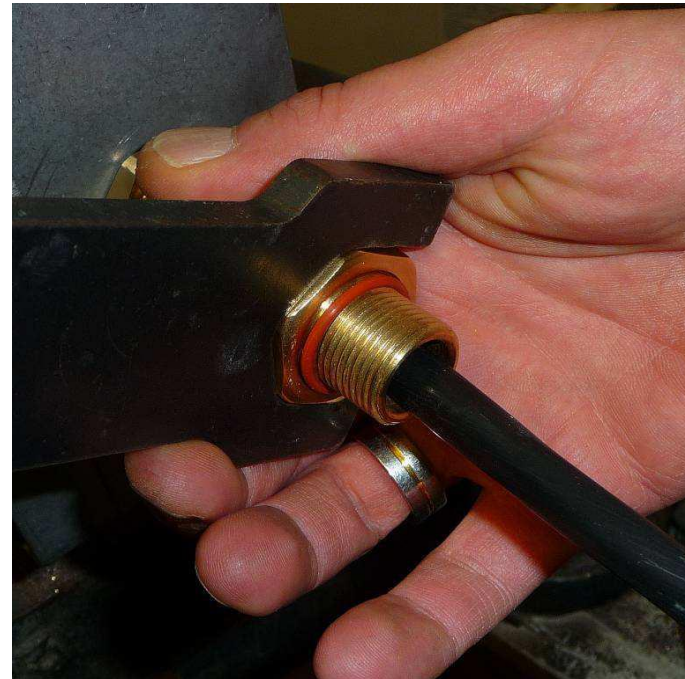
CR-S*M Type Installation Guide

8. Clean off excess compound from Entry Body to allow withdrawal when compound has cured (arrow C on instructions). Cores may be disturbed after 1 hour. Leave to cure for 4 hours when working at 21°C.



CR-S*M Type Installation Guide

9. To release the joint for inspection, unscrew the union nut. Use a wrench on the Conduit Nut as indicated. This will release the compound from the entry body. Do not over rotate as this may damage cable conductors.



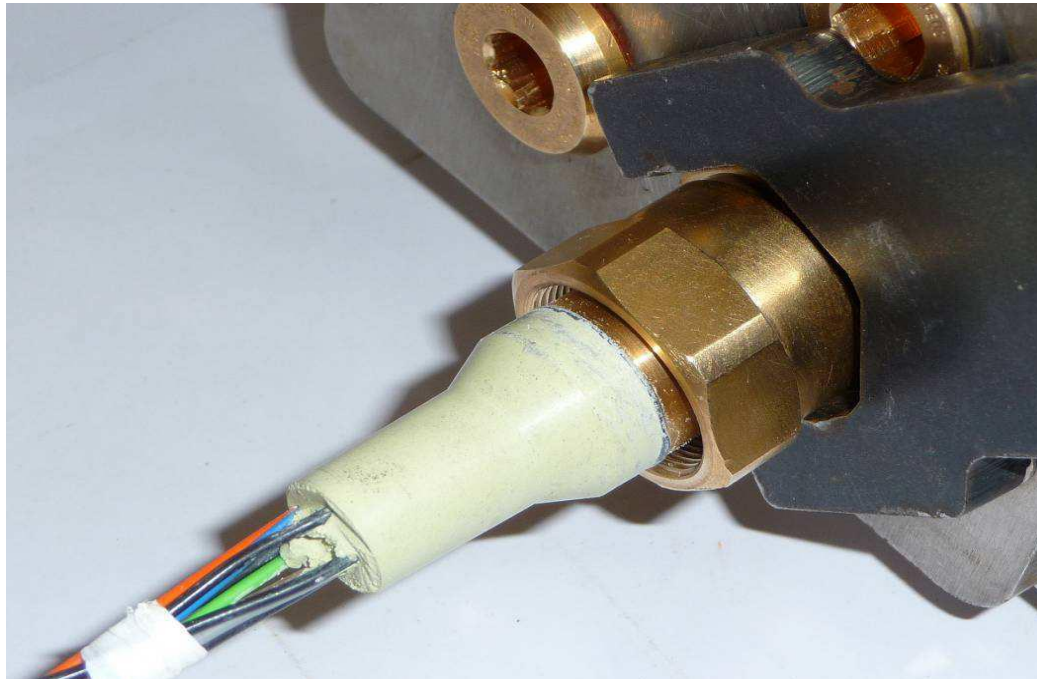
CR-S*M Type Installation Guide

- Correct compound form should be as shown.
- Ensure there are no voids in the form.



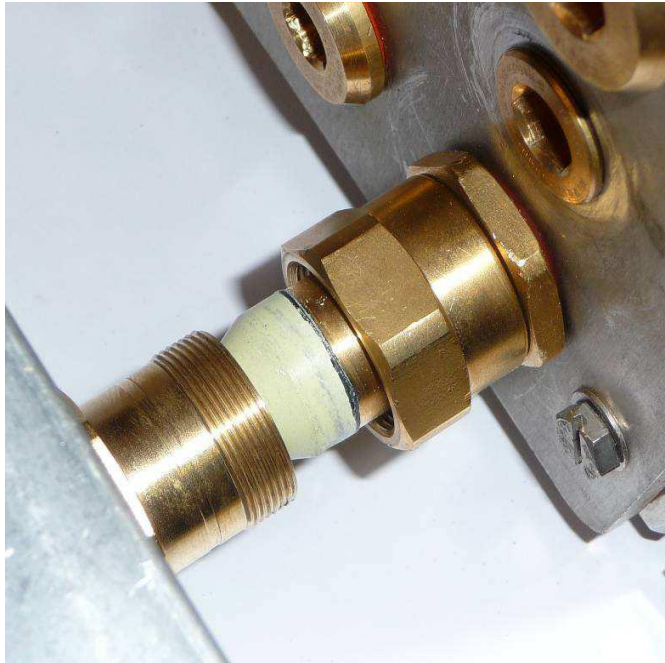
CR-S*M Type Installation Guide

10. Fit the rear assembly in to the second enclosure. Hand-tighten and then using a wrench, tighten a further $\frac{1}{2}$ turn.



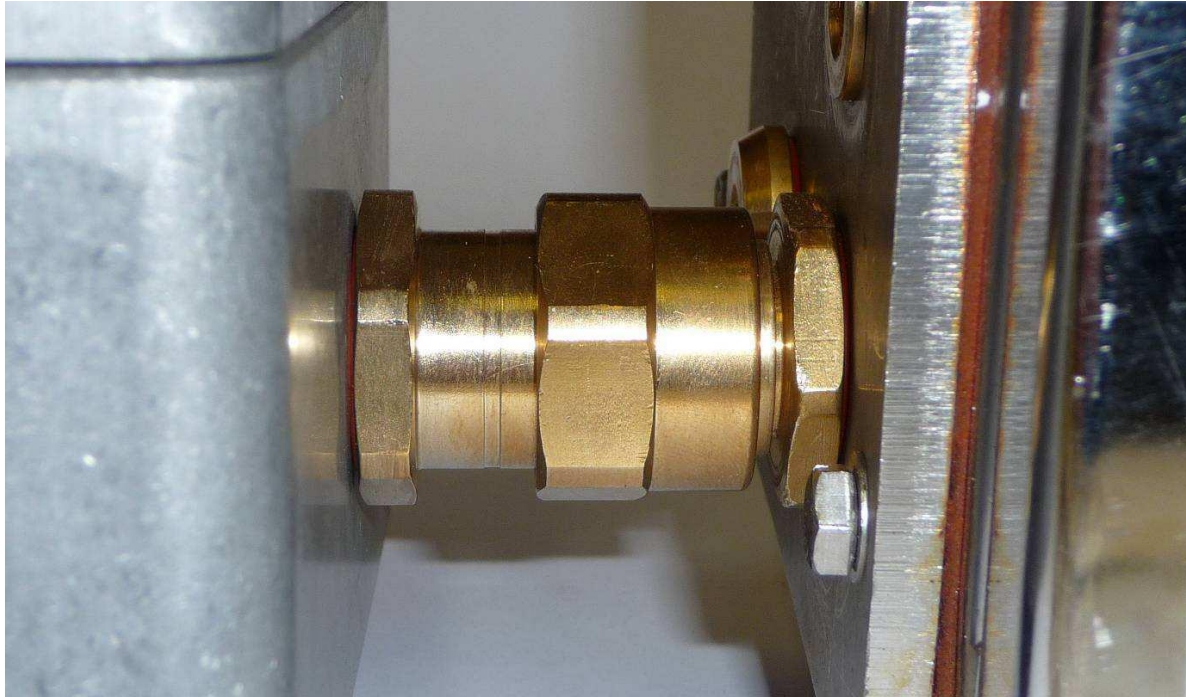
CR-S*M Type Installation Guide

- To re-make joint , re-insert compound assembly into Entry body as shown and tighten as detailed in the supplied instructions. This will draw the two enclosures together.



CR-S*M Type Installation Guide

Completed Assembly

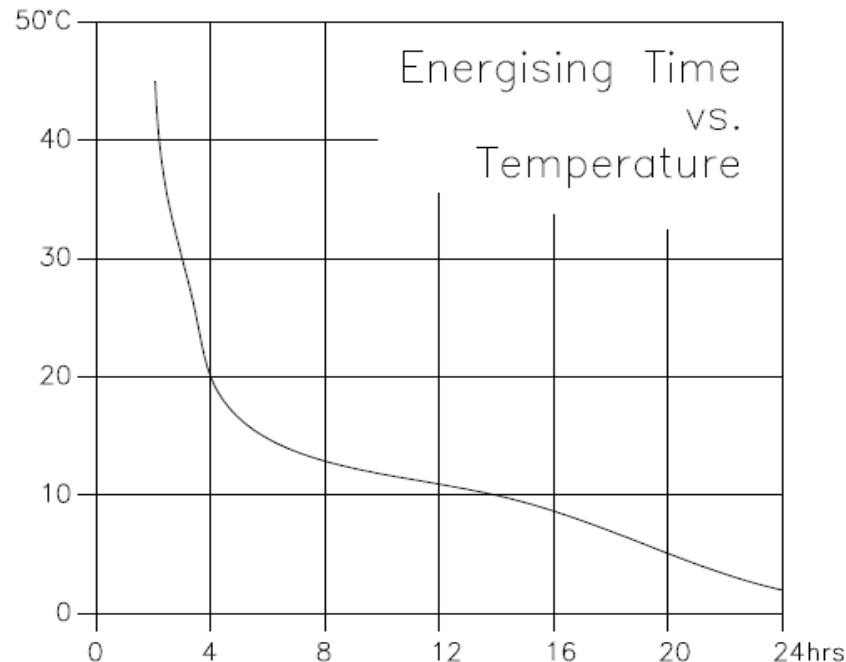


Installation Guide

CT0034 V1.0

CR-S*M Type Installation Guide

11. The equipment should not be energised until the compound has been left to cure for at least 4 hours when working at 21° C. See the chart 'Energising Time vs. Temperature' for further guidance.



If additional information or assistance is required please contact Peppers for further details: -

Peppers Cable Glands Limited

Stanhope Road - Camberley

Surrey. GU15 3BT

United Kingdom

Tel: +44 (0) 1276 64232 Fax: +44 (0) 1276 691752

Email: admin@peppers.co.uk

Website: www.cableglands.com