

# Metallic Adaptors and Reducers

Ex db : Ex eb : Ex nR : Ex ta : IP66 : IP68 Class I Div 1 : AEx db : AEx eb : AEx ta



## PRODUCT TYPE AR



### PRODUCT DESCRIPTION

"AR" Series Certified Adaptors & Reducers provide a method of matching electrical thread forms on Ex equipment whilst maintaining Ex db, Ex eb, Ex ta and Ex nR methods of explosion protection. Approved for use in mining (except Aluminium) and surface installations, they maintain IP66 & IP68 for IEC type applications and Class I Division 1 and Type 4X/6P for CEC / NEC type applications. All external metric threads are fitted with a nitrile O-ring as standard.

### COMPLIANCE STANDARDS:

EN 60079-0, EN 60079-1, EN 60079-7, EN 60079-15, EN 60079-31  
IEC 60079-0, IEC 60079-1, IEC 60079-7, IEC 60079-15, IEC 60079-31 & 60529  
C22.2 (see certificate), UL514B, UL1203, ANSI/UL 60079-0/1/7, ISA 60079-31, UL 50E

#### CERTIFICATION:

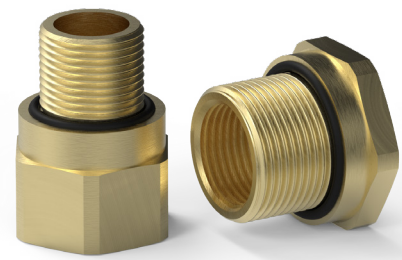
<b>UKEX</b>	I M2 II 1D 2G Ex db I Mb / Ex db IIC Gb / Ex eb I Mb / Ex eb IIC Gb / Ex ta IIIC Da II 3G Ex nR IIC Gc
<b>ATEX</b>	I M2 II 1D 2G Ex db I Mb / Ex db IIC Gb / Ex eb I Mb / Ex eb IIC Gb / Ex ta IIIC Da II 3G Ex nR IIC Gc
<b>IECEX</b>	Ex db I Mb / Ex db IIC Gb / Ex eb I Mb / Ex eb IIC Gb / Ex nR IIC Gc / Ex ta IIIC Da
<b>CEC - Canada</b>	Ex db IIC Gb / Ex eb IIC Gb / Ex ta IIIC Da Class I Division 1, Groups A, B, C & D Class II Division 1, Groups E, F & G Class III, Type 4X/6P
<b>NEC - USA</b>	Class I Zone 1 AEx db IIC Gb / AEx eb IIC Gb / Class II Zone 20 AEx ta IIIC Da Class I Division 1, Groups A, B, C & D Class II Division 1, Groups E, F & G Class III, Enclosure Type 4X/6P
<b>EAC</b>	PB Ex db I Mb X / 1Ex db IIC Gb X / PB Ex eb I Mb X / 1Ex eb IIC Gb X / Ex nR IIC Gc X Ex ta IIIC Da X
<b>INMETRO - Brazil</b>	Ex db I Mb / Ex db IIC Gb / Ex eb I Mb / Ex eb IIC Gb / Ex nR IIC Gc / Ex ta IIIC Da
<b>CCC - China</b>	Ex db I Mb / Ex db IIC Gb / Ex eb I Mb / Ex eb IIC Gb / Ex nR IIC Gc / Ex ta IIIC Da
<b>UKRAINE</b>	I M2 Ex db I Mb / Ex eb I Mb / II 2GD Ex db IIC Gb / Ex eb IIC Gb / Ex tb IIIC Db II 3G Ex nR IIC Gc
<b>CCoE - India</b>	Ex db I Mb / Ex db IIC Gb / Ex eb I Mb / Ex eb IIC Gb / Ex nR IIC Gc
<b>ABS</b>	Specified ABS Rules
<b>LLOYD'S</b>	Ex db I Mb / Ex db IIC Gb / Ex eb I Mb / Ex eb IIC Gb / Ex nR IIC Gc / Ex ta IIIC Da
<b>DNV</b>	Ex db I Mb / Ex db IIC Gb / Ex eb I Mb / Ex eb IIC Gb / Ex nR IIC Gc / Ex ta IIIC Da

#### CERTIFICATION No:

<b>UKEX</b>	CML 21UKEX1038X & CML 21UKEX4042X
<b>ATEX</b>	CML 19ATEX1090X & CML 19ATEX4092X
<b>IECEX</b>	IECEX CML19.0022X
<b>CEC - Canada</b>	CSA 2310046
<b>NEC - USA</b>	CSA 2310046
<b>EAC</b>	RU C-GB.AXK58.B.051063/24
<b>INMETRO - Brazil</b>	NCC 13.2189 X
<b>CCC - China</b>	2021312313000373
<b>UKRAINE</b>	CLJ 18.0319 X
<b>CCoE - India</b>	PESO P494321/15 & P494321/19
<b>ABS</b>	20-LD1944057-PDA
<b>LLOYD'S</b>	LR2124442TA
<b>DNV</b>	TAE00004XK

#### NOTES

- Assembly instructions must be read prior to installation and adhered to in full.
- For Ex db applications female threads must comply with clause 5.3 of IEC 60079-1.
- For Ex nR applications parallel entry threads must be installed with a suitable entry thread seal.
- Where applicable, the standard O-ring material is nitrile. Other options are available upon request.
- Aluminium versions are not suitable for Group I Mining applications.
- Only products with Metric and NPT threads are marked with CSA approval.
- Brass products are not marked or intended to be used in Class I Division 1 installations.
- Peppers supply products with parallel entry threads that conform to the flameproof threaded joint



#### EXAMPLE PART NUMBERING: AR1BF/NP/M20/M25

<b>AR</b>	Thread converting Adaptor/Reducer
<b>1</b>	No IP O-ring(O) - Nitrile (1) - Silicone (3)
<b>B</b>	Brass (B) - Stainless Steel (S) - Aluminium (A)
<b>F</b>	Multiple Certification
<b>K-V-H</b>	Locknut & Nylon (K), Fibre (V) or PTFE (H) IP Washer
<b>T</b>	Including Earth Tag
<b>S</b>	Including Serrated Washer
<b>1</b>	Quantity per kit
<b>NP</b>	Nickel Plated
<b>M20</b>	Male Entry Thread
<b>M25</b>	Female Entry Thread

#### OPTIONAL ACCESSORIES:

<b>Locknut (L)</b>	Brass (ACBLN) / St-Steel (ACSLN) / Aluminium (ACALN)
<b>Earth Tag (T)</b>	Brass (ACBET) / St-Steel (ACSET) / Aluminium (ACAET)
<b>IP WASHERS</b>	Nylon (N) / Fibre (J) / PTFE (Z)
<b>Serrated Washer</b>	Stainless Steel (S)

<b>IP RATING:</b>	IP66 & IP68 (100 metres for 7 days) & Type 4X/6P
<b>OPERATING TEMPERATURE:</b>	O-ring - None -100°C to +400°C O-ring - Nitrile -30°C to +100°C O-ring - Silicone -60°C to +200°C
<b>MATERIALS:</b>	Brass, Stainless Steel or Aluminium
<b>PLATING:</b>	Electroless Nickel

**Male and Female Thread References and Size information can be found on page 77 of our product catalogue. Adaptor and Reducer size information is available on pages 78 + 79 of our product catalogue. Male and female threads are manufactured in accordance with:-**

- ISO Metric threads to ISO 965-1, ISO 965-3, BS3643 and IEC 60423
- NPT and NPS threads are in accordance to ANSI B1.20.1
- PG threads to DIN40430
- ET threads to Imperial Conduit BS31
- ISO Pipe Parallel to ISO 228 and BS2779 (BSPP, G, R, PF & Tpy 6)
- ISO Pipe Taper to ISO 7-1 and BS21 (BSPT, Gc, Gk, Rk, PT & Kmpy 6)

requirements of IEC/EN 60079-1 and other equivalent standards. We usually incorporate a thread run out according to the general machining techniques and will not have a full form thread for the entire length. Peppers Cable Glands Limited will not be held responsible for clients' installations where this has not been taken into account.

- Where approval in addition to UKEX, ATEX, IECEX and CSA is required, this must be clearly requested at time of enquiry / order.